

# *UNITREE* B2

## Go Beyond The Limits

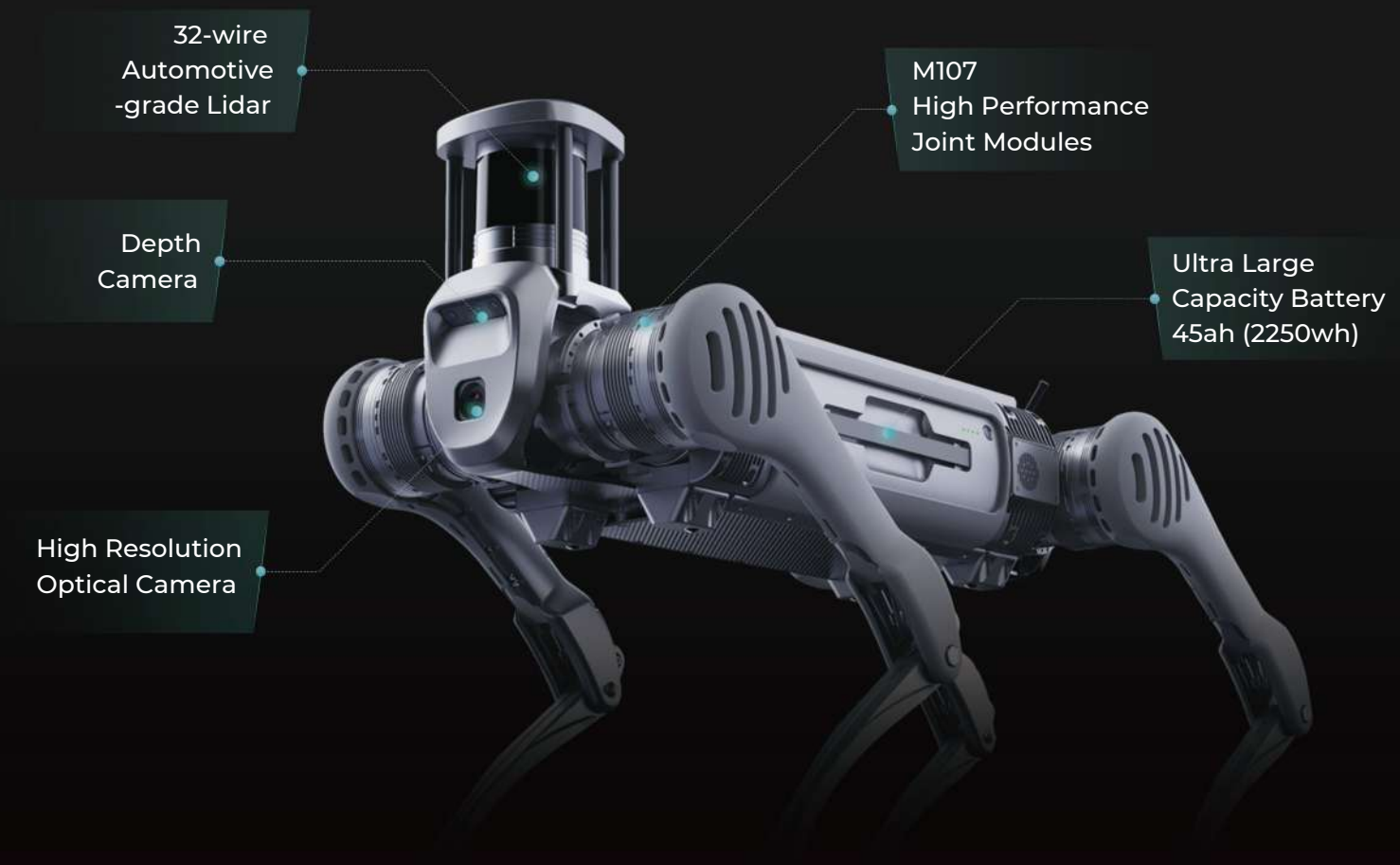
Lead The Industry Application



[www.unitree.com.tr](http://www.unitree.com.tr)

# Full-scene Adaptation, All-around Robot

The comprehensive performance in terms of load, endurance, motion capability and speed is two to three times that of existing quadruped robots worldwide!



> 6m/s [1]

Max Running Speed

About 360N.m

Max Joint Torque

> 1.6m

Longest Jump Distance

Max 120kg

(standing load)

> 40kg

(continuous walking load)

Ultra Load

Max 40cm

(obstacle crossing)

> 45°

(slope angle)

Max Walking Capacity

> 5h

(continuous walking without load)

> 4h

(20kg load continuous walking)

Ultra Long Endurance

# The Ubiquitous All-around Assistant

Leading Industrial Intelligence in All Scenarios.



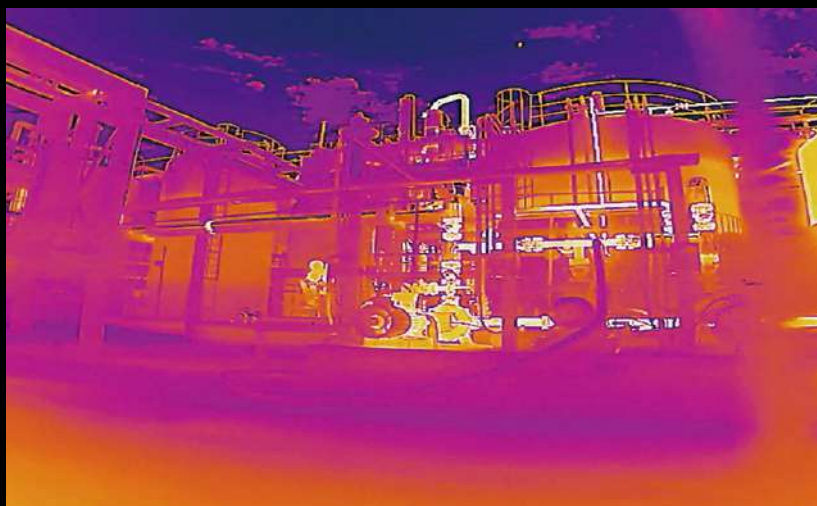
## Power Inspection

Intelligent Power Solutions  
Industry Application Leader



## Emergency Rescue

Working on all-terrain like long stairs, rock piles, steep slopes, etc.



## Industrial Inspection

Infrared Scanning  
3D Mapping  
Optimized environmental perception





## 01 All-rounded to Cope with A Variety of Environments

Excellent terrain adaptability to ensure stable travel on slippery or uneven surfaces.



## 02 Climbing Stairs As If They Were Flat

Effortlessly tackling steps of over 40cm.



## 03 100% Increase in Sustained Load 200% Increase in Endurance

100% increase in continuous walking with load greater than 40kg; continuous walking with 20kg load can last for greater than 4 hours with over 15km mileage.



## 04 170% Increase in Joint Performance with 360 N.m of Torque

Extreme performance provides greater flexibility and stability for industrial operations.



Wheeled and Legged forms

## Breaking Through Endurance Limitations

Innovative structural design of the B2 realizes switching between legged and wheeled forms (optional).



Plug-in battery

## Stable and Reliable Autonomous Charging

B2 battery supports quick change and also supports autonomous charging solutions (optional), suitable for a wide range of solutions.



# Parameters

Size(Standing)	1098mm×450mm×645mm
Size(Lying Prone)	880mm×460mm×330mm
Weight	≈60kg Total weight (battery included)
Battery Performance	Battery capacity 45Ah（2250Wh） , voltage 58V
	Battery life 4-6h
Endurance Ability	Walking without load > 5h, and the mileage > 20km
	Walking with 20kg load > 4h, and the mileage> 15km
Wheeled Foot	Optional
Load(Standing)	Max. 120kg
Load(Walking)	> 40kg
Continuous Stair Climbing	Stairs of 20~25cm
Single Obstacle Crossing	Climb up and down stairs of 40cm in forward direction
Climbing Angle	> 45°
Operating Temperature	-20℃ ~55℃
Running Speed	> 6m/s [1]
Ditch Jumping Width	0.5~1.2m
Max Jump Distance	> 1.6m
Ingress Protection	IP67
Control and Perception	Standard : Intel Core i5 (Platform Function), Intel Core i7 (User Development) Optional : Intel Core i7 and Jetson Orin NX (Maximum up to 3 devices)
Sensing Sensor	3D LiDAR×1+ Depth camera×2+ Optical camera×2(Varies with different configurations)
Interface	1000M-Base-Ethernet×4, USB3.0×4, 12V×4, 5V×1, 24V×4, BAT×1

\*[ 1 ]: Implemented in a special configuration. Actually, speed limits will be set for safety.

\*Warm reminder: some functions require manual operation or secondary development, and may vary with different configurations.

\*Note that the above parameters may vary in application under different business scenarios, parameter configurations of different models, etc. Please refer to the actual situation.

\*This product is a civilian robot. We kindly request that all users refrain from making any dangerous modifications or using the robot in a hazardous manner.

# ***UNITREE***

Web: [unitree.com.tr](http://unitree.com.tr)  
Tel: 0216 652 2300  
Email: [info@prosmt.com](mailto:info@prosmt.com)



Follow us Unitreeturkiye

Please visit Unitree Robotics Website for more related terms and policies,  
and comply with local laws and regulations.